

**Product Brief:**

**SDC-MCF10G 802.11g Miniature CF Module with Antenna Connectors**

The SDC-MCF10G miniature compact flash radio module from Summit Data Communications is a high-performance 802.11g radio in a customized form factor. The radio and its software – both proven on business-critical mobile devices that operate in harsh environments – combine to provide unmatched range, robust security, seamless mobility, and easy administration.



Each MCF10G module delivers:

- Hardware: Maximized radio range, minimized power consumption, and broad operating temperature range
- Software: Enterprise-level security, fast and reliable roaming, and easy administration
- Certifications: Regulatory certifications plus Wi-Fi Alliance® and CCX V4 certifications

*The SDC-MCF10G CF radio module is designed for use in business-critical mobile devices and the challenging RF environments in which they operate.*

The MCF10G module is backed by a full set of support services including system integration support, regulatory process assistance, and technical support from product and wireless LAN (WLAN) experts.

**Hardware Capabilities**

---

The MCF10G module is designed for use in business-critical mobile devices and the challenging radio environments in which they operate. Hardware innovations enable the MCF10G module to provide far greater performance and range than WLAN radio modules designed for office and consumer applications while minimizing power consumption and allowing for operation in extreme environments. Key hardware capabilities include:

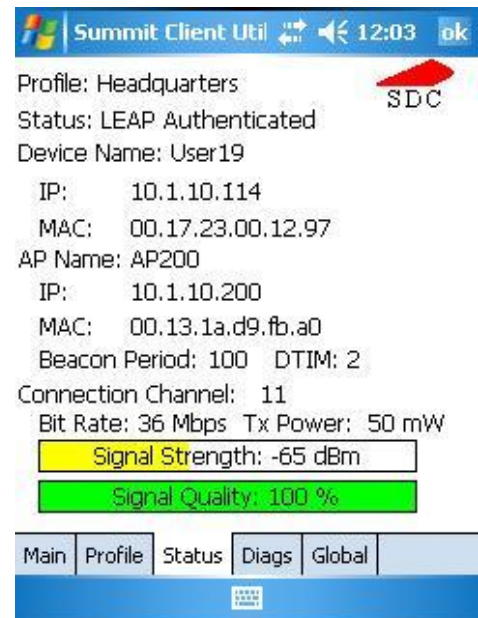
- **802.11b/g:** By supporting the IEEE 802.11g protocol, the MCF10G module provides for a maximum data rate of 54 megabits per second (Mbps) to maximize data transfer and overall WLAN performance. Operating in the 2.4 GHz portion of the radio frequency spectrum, 802.11g is a superset of the popular 802.11b standard. As a result, the MCF10G module can be thought of as an 802.11b and 802.11g module.

- **Antenna connectors:** With dual Hirose U.FL antenna connectors, the MCF10G module supports antennas of varying types and gains. The dual connectors support transmit and receive diversity to maximize performance in high multipath environments.
- **Range:** To maximize radio range – how far the module can be from a WLAN access point and still send data to that AP and receive data from it – the MCF10G module offers market-leading transmit power, receiver sensitivity, and delay spread. As a result, the MCF10G module delivers reliable connectivity, even in environments with few APs, many substances that absorb or reflect radio waves, and many devices that compete for the airwaves.
- **Low power consumption:** With power consumption that's up to 40% lower than other 802.11g radio modules, the MCF10G module maximizes device battery life to provide for full-shift operation.
- **Extended operating temperature:** To allow for device operation in extreme environments such as factories, warehouses, freezers, and the outdoors, the MCF10G module provides an extended operating temperature range of -30° to +75° C, which far exceeds the capabilities of most other radio modules.

## Software Capabilities

To operate effectively in a business-critical mobile device, a WLAN radio needs specialized software to deliver the security, trouble-free operations, and manageability that customers demand. Software for the MCF10G module includes a driver, an integrated supplicant, and a full-featured management and monitoring utility called the Summit Client Utility (SCU). Key capabilities of MCF10G module software include:

- **Operating system support:** MCF10G software operates on:
  - Windows Embedded CE 5.0 and 6.0 (all versions)
  - Windows Mobile 5.0, 6.0, 6.1, and 6.5
  - Windows XP Professional and Embedded
- **Security:** Compliance with IEEE 802.11i, which is certified by the Wi-Fi Alliance through testing for Wi-Fi Protected Access™ 2 (WPA2) Enterprise, provides for the highest level of interoperable WLAN security available. An integrated 802.1X supplicant supports



*SCU is a graphical utility for configuration, troubleshooting, and management*

authentication via pre-shared keys as well as a broad range of EAP types including EAP-TLS, EAP-TTLS, PEAP-MSCHAPv2, PEAP-GTC, PEAP-TLS, LEAP, and EAP-FAST. Data privacy is ensured via encryption and decryption using AES (WPA2), TKIP (WPA), or WEP.

- **Mobility:** A mobile device often roams from one AP to another. When scanning for a better AP or roaming to that AP, a device's radio cannot send or receive data. If roaming takes too long, a business-critical application that requires a constant connection can be disrupted. Summit radios support the fastest roaming in the industry and enable an administrator to tune roaming behavior to the needs of an application and its environment.
- **Administration:** SCU enables a user to view, and an administrator to configure, all radio operation and security settings. SCU also enables a user or administrator to view status and troubleshoot issues. All SCU functions are available to centralized management applications through the Summit software developer's kit (SDK).
- **Integration:** Summit provides device manufacturers with the Summit Manufacturing Utility, a tool that can be used to set regulatory parameters such as channel set and maximum transmit power to provide for worldwide compliance across multiple platforms.

## Certifications

---

The MCF10G module is certified as compliant with all applicable regulations as set forth by agencies such as ETSI, the FCC, and TELEC. Thanks to software support for all Wi-Fi requirements and key Cisco innovations, the MCF10G module is Wi-Fi CERTIFIED™ and certified for Cisco Compatible Extensions (CCX) Version 4 for application-specific devices.

Summit helps device manufacturers achieve regulatory, Wi-Fi, and CCX certifications for devices equipped with the MCF10G module. By leveraging existing grants, test reports, and approvals, Summit customers incur minimal costs when attaining all required certifications.

## Support Services

---

A business-critical mobile device depends on its WLAN radio for communication with the business network. **Summit understands that, if the radio doesn't work, the device doesn't work. If the device doesn't work, the end user can't do his or her job.**

Summit tests the MCF10G module on a broad range of devices. For device vendors that offer the MCF10G module as a device component or option, Summit provides consultation and documentation to aid in hardware and software integration. When devices experience issues with the MCF10G module in the field, Summit's support team provides Level 2 technical





support to device vendors. That team is well-versed in radio frequency characteristics, wired and wireless network architectures, and security protocols.

## SDC-MCF10G Specifications

<b>System Interface</b>	16-bit Compact Flash with Molex 54722-0607 60-pin connector, which mates to Molex 55560-0607 60-pin connector
<b>Antenna interface</b>	Two U.FL (Hirose) connectors for antenna diversity
<b>Chipset</b>	Broadcom BCM4318E
<b>Input Power Requirements</b>	3.3 VDC +/- 10%
<b>Typical Power Consumption (at maximum transmit power setting)</b>	Transmit: 400 mA (1320mW) Receive: 180 mA (594mW) Standby: 10 mA (33 mW)
<b>Operating Temperature</b>	-22° to 167°F (-30° to 75°C)
<b>Operating Humidity</b>	10 to 90% (non-condensing)
<b>Length</b>	1.26" (32 mm)
<b>Width</b>	0.87" (22 mm)
<b>Thickness</b>	0.14" (3.5 mm)
<b>Weight</b>	0.3 oz (9 g)
<b>Mounting</b>	60-pin connector
<b>Network Standards</b>	IEEE 802.11b, 802.11g, 802.11i
<b>Network Architecture Types</b>	Infrastructure and ad hoc
<b>Frequency Band</b>	2.4 to 2.4897 GHz
<b>Wireless Media</b>	Direct Sequence-Spread Spectrum (DSSS) Orthogonal Frequency Divisional Multiplexing (OFDM)
<b>Media Access Protocol</b>	Carrier sense multiple access with collision avoidance (CSMA/CA)
<b>Data Rates Supported</b>	802.11b (DSSS): 1, 2, 5.5, 11 Mbps 802.11g (OFDM): 6, 9, 12, 18, 24, 36, 48, 54 Mbps
<b>Modulation</b>	1, 6, 9 Mbps: BPSK 2, 12, 18 Mbps: QPSK 5.5, 11 Mbps: CCK 24, 36 Mbps: 16-QAM 48, 54 Mbps: 64-QAM
<b>Regulatory Domain Support</b>	FCC (Americas, Parts of Asia and Middle East) ETSI (Europe, Middle East, Africa and Parts of Asia) MIC (previously TELEC) (Japan) KCC (Korea)
<b>Operating Channels</b>	FCC: 11 (3 non-overlapping) ETSI: 13 (3 non-overlapping) MIC: 14 (4 non-overlapping) KCC: 13 (3 non-overlapping)

<p><b>Transmit Power Settings</b></p> <p><i>Maximum transmit power will vary according to individual country regulations. All values nominal, +/-1.5dBm</i></p>	<p><b>DSSS:</b> 18 dBm (63 mW) 17 dBm (50 mW) 15 dBm (30 mW) 10 dBm (10 mW) 0 dBm (1 mW)</p>	<p><b>OFDM:</b> 15 dBm (30 mW) 10 dBm (10 mW) 0 dBm (1 mW)</p>
<p><b>Typical Receiver Sensitivity</b></p>	<p>1 Mbps: -96 dBm 2 Mbps: -95 dBm 5.5 Mbps: -94 dBm 6 Mbps: -94 dBm 9 Mbps: -91 dBm 11 Mbps: -90 dBm 12 Mbps: -88 dBm 18 Mbps: -86 dBm 24 Mbps: -83 dBm 36 Mbps: -78 dBm 48 Mbps: -76 dBm 54 Mbps: -75 dBm</p>	
<p><b>Delay Spread</b></p>	<p>1 Mbps: 600 ns 2 Mbps: 500 ns 5.5 Mbps: 400 ns 6 Mbps: 400 ns 9 Mbps: 400 ns 11 Mbps: 200 ns 12 Mbps: 350 ns 18 Mbps: 350 ns 24 Mbps: 250 ns 36 Mbps: 250 ns 48 Mbps: 150 ns 54 Mbps: 150 ns</p>	
<p><b>Security</b></p>	<p><b>Standards</b> Wireless Equivalent Privacy (WEP) Wi-Fi Protected Access (WPA) IEEE 802.11i (WPA2)</p> <p><b>Encryption</b> Wireless Equivalent Privacy (WEP, RC4 Algorithm) Temporal Key Integrity Protocol (TKIP, RC4 Algorithm) Advanced Encryption Standard (AES, Rijndael Algorithm)</p> <p><b>Encryption Key Provisioning</b> Static (40-bit and 128-bit lengths) Pre-Shared (PSK) Dynamic</p> <p><b>802.1X Extensible Authentication Protocol Types</b> EAP-FAST, EAP-TLS, EAP-TTLS, PEAP-GTC, PEAP-MSCHAPv2, PEAP-TLS, LEAP</p>	
<p><b>Operating Systems Supported</b></p>	<p>Windows Mobile 6.5, 6.1, 6.0, 5.0, and (Pocket PC) 2003 Windows Embedded CE 6.0 (all versions) and 5.0. Windows XP Professional and Embedded</p>	

<p><b>Compliance</b></p>	<p><b>ETSI Regulatory Domain</b> EN 300 328 EN 301 489-1 EN301 489-17 EN 60590-1 EN 50371 EU 2002/95/EC (RoHS)</p> <p><b>FCC Regulatory Domain</b> FCC Part 15.247 Subpart C</p> <p><b>Industry Canada</b> RSS-210 RSS-Gen Issue 2</p> <p><b>TELEC Regulatory Domain</b> Article 2 Item 19, Category WW (2.4GHz Channels 1-13) Article 2 Item 19-2, Category GZ (2.4GHz Channel 14)</p>
<p><b>Certifications</b></p>	<p><b>Wi-Fi Alliance</b> 802.11b, 802.11g WPA Enterprise WPA2 Enterprise</p>  <p><b>Cisco Compatible Extensions (CCX)</b> Version 4</p> 
<p><b>Warranty</b></p>	<p><b><u>Limited Lifetime</u></b></p>

**Summit Data Communications, Inc.** designs, manufactures, and supports WLAN radio modules for business-critical mobile devices such as data terminals, medical devices, and industrial equipment. Summit delivers comprehensive solutions of hardware, software, certifications, and support services that ensure trouble-free integration and operation.

**Summit Data Communications, Inc.**  
526 South Main Street, Suite 805  
Akron, Ohio 44311 USA  
+1 330-434-7929  
<http://www.summitdatacom.com>

Copyright © 2007-2011 Summit Data Communications, Inc. Summit Data Communications, the Summit logo, the Summit symbol, and “The Pinnacle of Performance” are trademarks of Summit Data Communications, Inc. All rights reserved. Wi-Fi®, Wi-Fi Alliance®, the Wi-Fi CERTIFIED logo, and the Wi-Fi logo are registered trademarks of the Wi-Fi Alliance; and the Wi-Fi Alliance logo, Wi-Fi CERTIFIED, and Wi-Fi Protected Access are trademarks of the Wi-Fi Alliance.